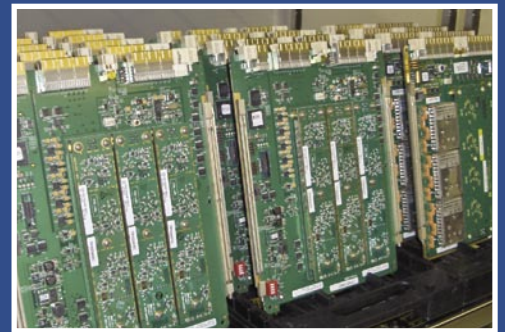




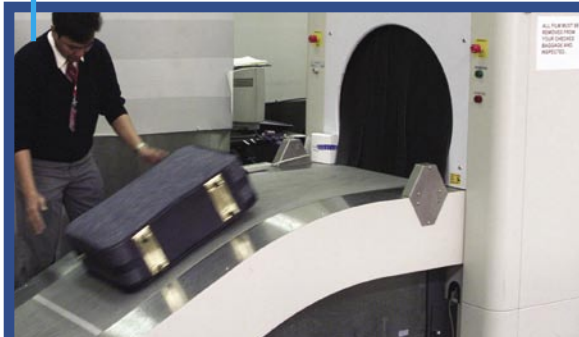
Concept Development, Inc.

*Product Development Based on  
Experience, Innovation & Dedication*



# Product Development, Manufacturing & Support

Homeland Security



Computer Systems Design



Medical Equipment



*Celebrating* **35** *Years*

## An Introduction

Concept Development, Inc. was established in 1972 to assist companies in meeting their needs for timely and cost effective product development. We accomplish this by collaborating with the customer's existing engineering group to effectively create an extension of the customer's engineer resources. CDI assists in the development requirements ranging from planned product introductions to emergency product adaptations arising from the customer's market needs. CDI has established itself as a flexible and responsive partner for many companies in a wide range of product technologies for an expanding set of markets.

## Our Business Model

CDI's unique "fixed-price" development model is made possible by careful attention to detail in the specification phase and by maintaining critical product development schedules.

CDI is an important partner in our customer's product introduction activities. CDI has created a detailed product development process that methodically drives the product through the idea, specification, and design phases, product certifications, manufacturing and long-term support. The process is continued by adding product life cycle support, such as eliminating components obsolescence issues and by adding mid-life product extensions through capability and feature updates.

1972

CDI started their business in a modest 1200 square foot facility in Santa Ana. The company's unique experience in "Core" memory design launched CDI into the OEM support industry. Mini-computers were the popular platform, and CDI was a pioneer in memory devices for the DEC and DG products.

1980

Core memory began its decline. CDI became a leader in semi-conductor memory products, introducing some of the very first "add-in" semi-conductor memory for microcomputers. Niche memory devices such as "Bubble" memory systems were developed for niche markets.

1985

Other peripheral controller developments emerged, many based on SMD and SCSI interfaces for our OEM customer's storage subsystems. By this time, CDI was developing parallel disk arrays, later coined RAID disk storage systems. The medical market absorbed most of CDI's development expertise in search of real-time storage for image capture systems for various medical modalities.

In-Flight Entertainment



Surveillance



Aerospace Applications



## Development

CDI's "Team Approach" to development creates a transparent relationship between CDI and the customer. Typical services provided include:

- Architectural Design
- Specification and Document Creation
- Hardware Design
- Software Design
- Mechanical Packaging
- Product Certification Assistance for EMI/UL, FAA and FDA Requirements

This range of experience allows CDI to contribute through all facets of the development process.

## Production and Support

An important aspect of any design activity is to efficiently move the design to production, with a plan that supports the completed product into the future. CDI's Production and Support services include:

- Prototype Design Verification Build
- Pre-Production Manufacturing Verification Build
- Full Production Build
- Product Warranty Support
- Long-term Product Life Cycle Support

CDI maintains a formal, demonstrable quality program following ISO-9001, FAA FDA GMP requirements and guidelines.

## Markets Served

Concept Development, Inc. has extensive product development experience in various markets. This experience allows CDI to contribute in product definition as well as design. Some of the markets addressed include:

- Medical Equipment
- Military/Aerospace Developments
- In-Flight Entertainment for Commercial Airlines
- Homeland Security and Surveillance Markets
- Various Commercial Product Markets

CDI caters to the OEM customer by providing tight revision control and life cycle support activities.

1990

Many medical industry products were created for CDI customers, including Portable X-Ray processor engines, and advanced PCI graphic engine accelerators. High performance designs such as data and image capture engines were produced for large government integrators.

2000

Product development and manufacturing at CDI stepped up rapidly to include specific medical industry network and server development, such as Dicom, JPEG chips and scan converters for higher resolution x-ray systems. In-Flight Entertainment (IFE) OEM products such as QAM modulators, and Fibre channel interfacing.

2008

Over the last 8 years, CDI has strengthened its IFE experience developing Video and Audio modulators and a complete set of Line Replaceable Units (LRUs) for video, sound and server support. Our growing technical expertise has enabled CDI to support Homeland Security baggage scanning equipment suppliers, and high-speed acquisition systems for defense aerospace applications.

# A Complete Development & Support Process





**Concept Development, Inc.**

1881 Langley Ave  
Irvine, California 92614-5623 USA  
949.623.8000 P  
949.623.8055 F

[www.cdvinc.com](http://www.cdvinc.com)